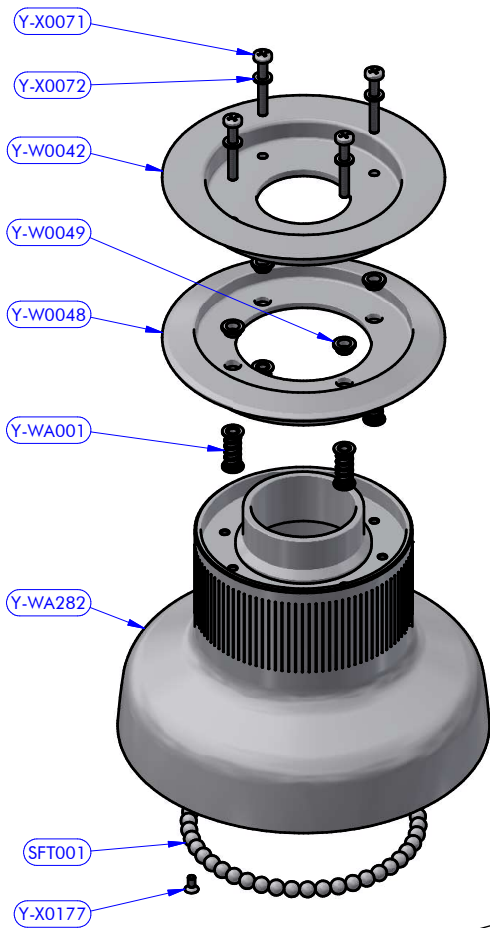


PARTS LIST

CODE	DESCRIPTION	MATERIAL	Q.TY
Y-W0006	Upper ring washer	Plastic	1
Y-W0018	Stripper	Plastic	1
Y-W0143	ST plug	Plastic	5
Y-W0160	Skirt	Aluminium	1
Y-W0721	Opening Tool	S.Steel	1
Y-W0914	Self-tailing arm	Aluminium	1
Y-W0923	Upper disk	Aluminium	1
Y-W1015	Upper cap	Aluminium	1
Y-WA273	Drum assy	Various	1
Y-WA291	Base + Gears assy	Various	1
Y-WA293	Main shaft assy	Various	1
Y-X0057	Screw	S.Steel	1



Code **Y-WA273**

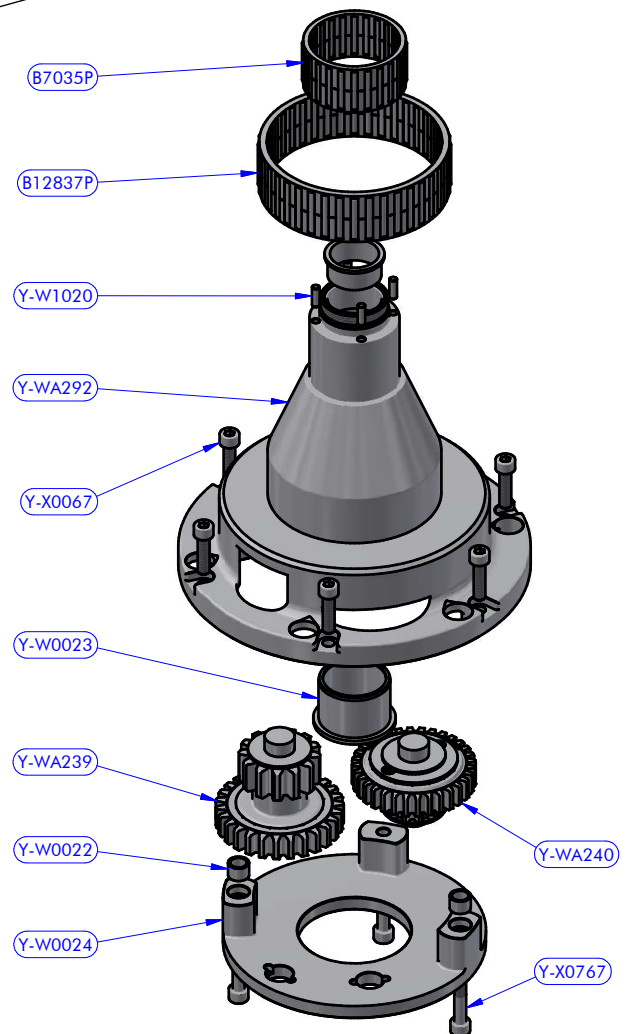
Drum XT66 AL with toothed crown AL Z51 + ST Discs

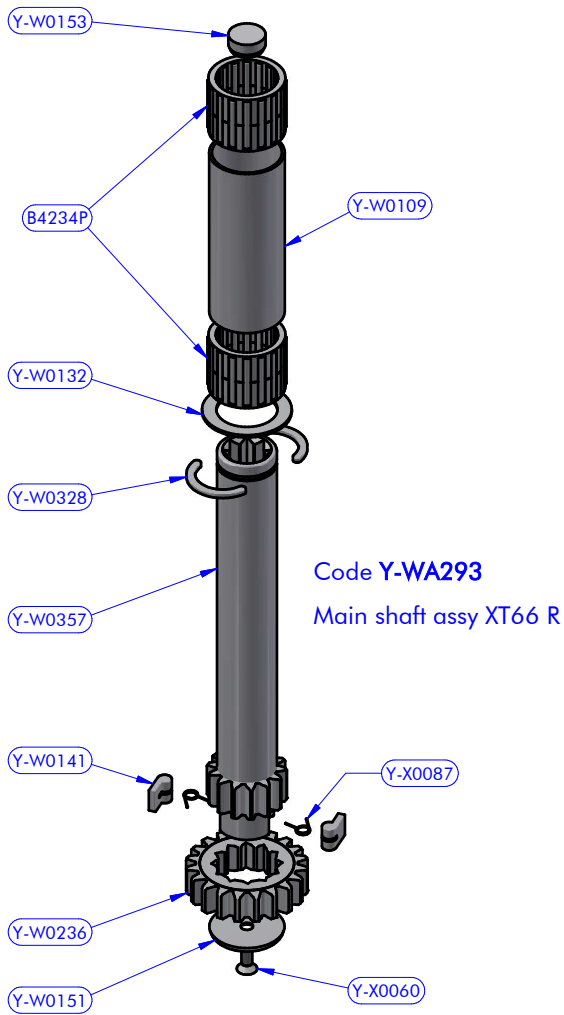
Y-WA273 PARTS LIST			
CODE	DESCRIPTION	MATERIAL	Q.TY
SFT001	Torlon ball	Torlon	46
Y-W0042	ST central disk	Aluminium	1
Y-W0048	ST lower disk	Aluminium	1
Y-W0049	ST disk bush	Plastic	4
Y-WA001	ST-spring assy	S.Steel	4
Y-WA282	Drum	Various	1
Y-X0071	Screw	S.Steel	4
Y-X0072	S.Steel washer	S.Steel	4
Y-X0177	Screw	S.Steel	1

Code **Y-WA291**

Base + Gears assy XT66 R

Y-WA291 PART LIST			
CODE	DESCRIPTION	MATERIAL	Q.TY
B7035P	Roller bearing	Plastic / Peek	1
B12837P	Roller bearing	Plastic / Peek	1
Y-W0022	Pipe spacer	S.Steel	2
Y-W0023	Bearing track	Plastic / S.Steel	1
Y-W0024	Gear base	Aluminium	1
Y-W0033	Main-shaft bushing	Plastic	1
Y-W1020	Cylinder pin	S.Steel	4
Y-WA239	Gears kit	Various	1
Y-WA240	Gears kit	Various	1
Y-WA292	Base + Stem	Aluminium	1
Y-X0067	Screw	S.Steel	6
Y-X0767	Screw	S.Steel	3





Y-WA293 PARTS LIST			
CODE	DESCRIPTION	MATERIAL	Q.TY
B4234P	Roller bearing	Plastic / Peek	2
Y-W0109	Pipe spacer	Plastic	1
Y-W0132	S.Steel washer	S.Steel	1
Y-W0141	Pawl	S.Steel	2
Y-W0151	Shaft cap	Plastic	1
Y-W0153	Shaft cap	POM-C	1
Y-W0236	Gear "A2"	Bronze	1
Y-W0328	Half-ring	Chromed brass	2
Y-W0357	Main shaft	S.Steel	1
Y-X0060	Screw	S.Steel	1
Y-X0087	Torsion spring	S.Steel	2

Y-WA239 PART LIST			
CODE	DESCRIPTION	MATERIAL	Q.TY
B2519	Roller bearing	Plastic / S.Steel	3
Y-W0032	Gear ring	S.Steel	1
Y-W0053	Gear lower washer	Plastic	1
Y-W0141	Pawl	S.Steel	4
Y-W0170	Gear axis	S.Steel HR	1
Y-W0195	Gear upper washer	Plastic	1
Y-W0611	Gear "B1"	Bronze	1
Y-W0612	Gear "B2"	Bronze	1
Y-X0052	Screw	S.Steel	2
Y-X0087	Torsion spring	S.Steel	4

Y-WA240 PART LIST			
CODE	DESCRIPTION	MATERIAL	Q.TY
B2519	Roller bearing	Plastic / S.Steel	2
Y-W0032	Gear ring	S.Steel	1
Y-W0053	Gear lower washer	Plastic	1
Y-W0141	Pawl	S.Steel	4
Y-W0179	Gear axis	S.Steel HR	1
Y-W0195	Gear upper washer	Plastic	1
Y-W0239	Gear "D1"	Bronze	1
Y-W0614	Gear "D2"	Bronze	1
Y-X0052	Screw	S.Steel	2
Y-X0087	Torsion spring	S.Steel	4

